

AZ25

固结磨具应用

产品牌号 : 1520

产品描述

AZ25 1520

1950

AZ25 1520

物理性能参数

	17		1950
(g/cm ³)	4.30	(g/cm ³)	2.00-2.40
	21 GPA	50	

典型化学成分

Al ₂ O ₃	74.5%	ZrO ₂	25.0%
TiO ₂	0.08%	SiO ₂	0.10%
Fe ₂ O ₃	0.15%	Na ₂ O	0.05%
CaO	0.15%	MgO	0.02%

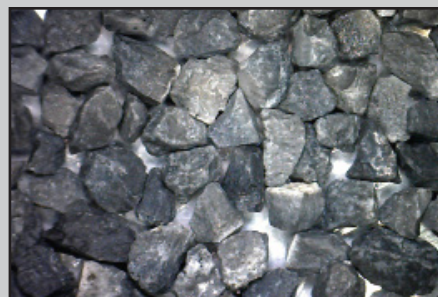
产品应用

1520				F4-F36	

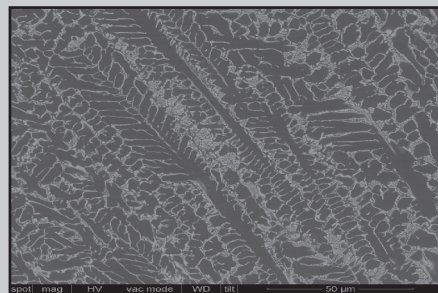
AZ-25

包装形式

25 /



AZ-25



AZ-25

()

AZ25

固结磨具应用

产品牌号 : 1520

堆积密度标准(LPD)

	(g/cm ³)	(g/cm ³)		(g/cm ³)	(g/cm ³)
8T	2.126	2.297	16T	2.071	2.282
10T	2.222	2.400	20T	2.025	2.250
12T	2.182	2.363	24T	2.010	2.242
14T	2.121	2.302	30T	2.005	2.237

粒度分布

4T	(+5/16")/0	(+3-1/2")/(0-20)	+4/40+	(+4+5)/70+	-6/(0-5)
6T	(+3-1/2")/0	+5/(15-30)	+6/35+	(+6+7)/55+	-8/(0-3)
8T	+4/0	+6/(8-23)	+7/30+	(+7+8)/65+	-10/(0-3)
10T	+5/0	+7/(2-17)	+8/20+	(+8+10)/60+	-12/(0-8)
12T	+6/0	+8/(1-16)	+10/20+	(+10+12)/60+	-14/(0-5)
14T	+8/0	+12/(20-40)	+14/35+	(+14+16)/60+	-18/(0-5)
16T	+10/0	+14/(5-25)	+16/30+	(+16+18)/60+	-20/(0-5)
20T	+12/0	+16/(0-20)	+18/25+	(+18+20)/60+	-25/(0-10)
24T	+16/0	+20/(0-25)	+25/45+	(+25+30)/65+	-35/(0-3)
30T	+18/0	+25/(0-25)	+30/45+	(+30+35)/65+	-40/(0-3)
36T	+20/0	+30/(0-25)	+35/45+	(+35+40)/65+	-45/(0-3)

*

圣戈班陶瓷材料(郑州)有限公司

452477

: +86 21 6361 7731

<http://www.saint-gobain-zz.com.cn>